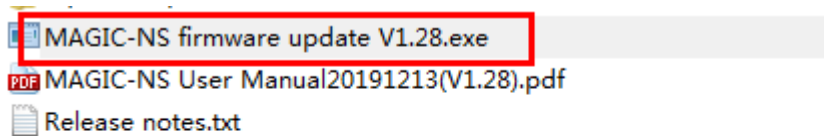


Please follow the below instruction to update Magic-NS, thanks !

1. Download the software from <http://www.mayflash.com/Support/Download/> and install it on your Windows system.

MAGIC-NS Wireless Controller Adapter for NINTENDO SWITCH & PC& NEOGEO mini	December 13, 2019	V1.28: Supports Xbox Elite Wireless Controller Series 2
--	----------------------	--

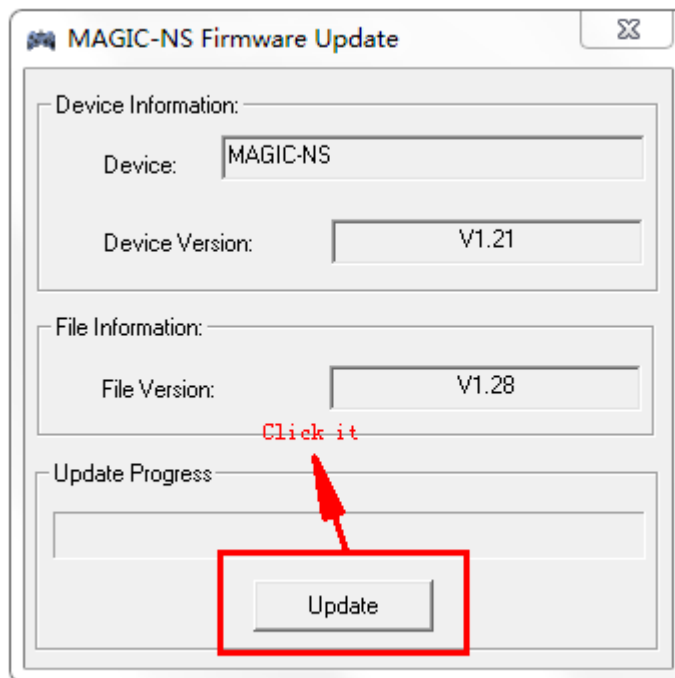
2. The firmware is in rar.format , please unzip it to exe.format by using winzip software .and then double click on the updater ( exe format ) and leave the updater window open on your screen.



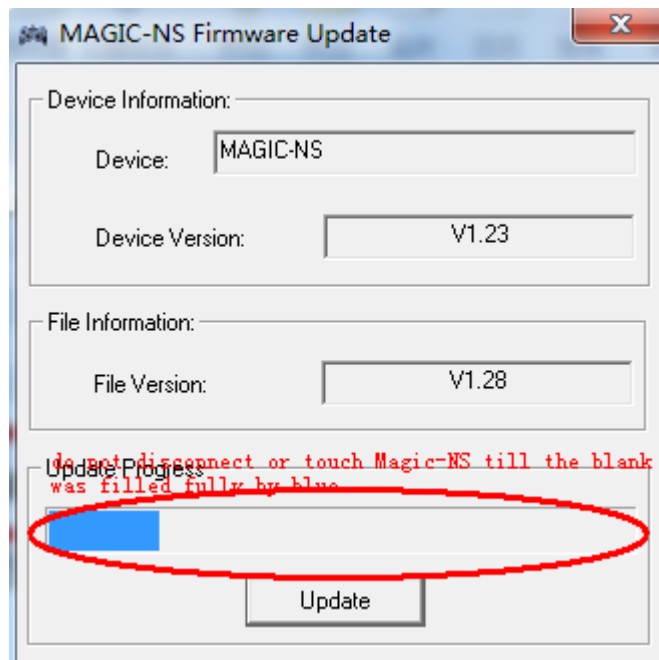
3. Plug Magic-NS to PC USB slot to check the mode . Please make sure your adapter is in the Nintendo Switch Mode or PS3/Dinput Mode (The LED indicator is in Red or Blue). If not in Red or Blue mode, please switch to the update mode manually by pressing and holding the button located at the side of the adapter for 3-5 seconds.



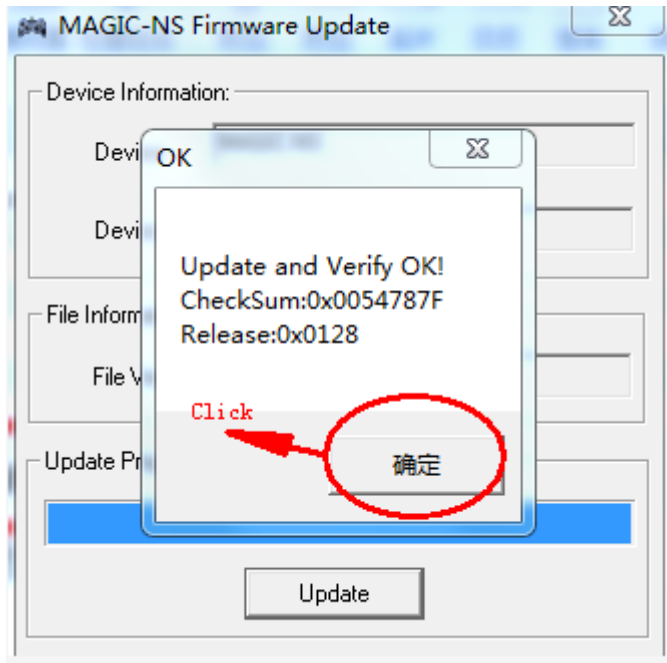
4. Remove Magic-NS from PC and then **press and hold the SYNC button on the side of the Magic-NS** to re-plug into PC USB slot.
5. As soon as the Magic-NS has been recognized by updater(LED indicator turns off) , select "Update"



6. Wait seconds , it will be updated soon . ( Noted : Do not disconnect the device until you are informed that the updated was completed successfully )



7, Next, click “ok”



8. At last , it is in the newest version now !

